



Hawaii Youth Symphony

Where Hawaii's youth make exceptional music together

...of

NOTE 

SAVE THESE DATES!

Aloha Concert Luncheon

Sun., May 13, 10:30 am
Hilton Hawaiian Village

Symphony Program '12-'13 Auditions

May 19-20 & May 26-27
Applications at the HYS website

Summer Strings

June 12-July 13
St. Andrew's Priory School
Applications at the HYS website

Pacific Music Institute

July 14-22
Applications at the HYS website

He Makana O Na Mele

Featuring YSI & Willie K
Sun., November 18, 5:30 pm
Hilton Hawaiian Village

FREE YSI Kauai Community Concert

Sun., February 10, 3:30 pm
Kauai Community College

FREE Listen & Learn Educational Concerts

Mon., February 11, 9:00 & 10:30
Kauai War Memorial Hall


More information at
www.HiYouthSymphony.org
808.941.9706

YSI's Free Spring Community Concert a Rousing Success



Soprano Bai He performing Johann Strauss II's 'Laughing Song' from the opera *Die Fledermaus* with Maestro Miyamura and YSI

This April's YSI Spring Community Concert was a terrific success for all involved! YSI and maestro **Henry Miyamura** performed marvelously, executing a very difficult program not only without any hitches, but also with passion and conviction. Audiences delighted in soprano **Bai He**'s soaring and melismatic flourishes in Johann Strauss II's 'Laughing Song,' and found great comic relief with **Stanton Haugen**'s blazing, yet light-hearted Mariachi jest in *La Virgen de la Macarena*. Haugen's assistants **Daniel Sanonikone** and **Parker Nakamura** displayed equal bravado and showmanship. Other highlights on the program included world premieres of pieces by **Dr. Byron Yasui** and **Michael-Thomas Foumai** (HYS '05). **Howard Dicus**, who emceed the evening—and is host of the popular radio show, *Howard's Day Off*—noted that Dr. Yasui's 'Fantasia for a Queen' had a "pastoral vein, not unlike Vaughn Williams's *Fantasia on a Theme of Thomas Tallis*." Foumai's three movement *Animal Farm* was nearly a concerto for orchestra, featuring each of the instrument families in ways that were virtuosic and rich. Congrats to all!

Each season, HYS chooses a cause or nonprofit to partner with, advancing opportunities for music to positively affect social or civic change. Broadening our connections to those around is central to who we are, and in this spirit, Child and Family Service was named a beneficiary for the YSI Spring Community Concert. Their mission of helping children grow up in safe, healthy environments not only intertwines closely with our own, but the reach, accessibility, and impact of their programs statewide is a good role model for all of us who strive to sustain positive futures for Hawaii's youth. Over **\$5,200** was raised for CFS! Thank you to everyone who came to support this cause. 



HYS programs are supported by the City & County of Honolulu and the Hawai'i State Foundation on Culture and the Arts, through appropriations from the Hawai'i State Legislature.



Letter from the Executive Director

Dear HYS Friends,



These first six weeks as HYS's new Executive Director have been personally inspiring and full of delight. Even though I was already somewhat familiar with how broad our offerings are, I am continually impressed. I have spent most of my time getting to know our programs and people. While I am sure I will be learning much more in the months ahead, I would like to share three things that have really made an impression on me.

First, that there is no singular experience in—or pathway into—our programs. Some students start as beginners in the HYS Academy and move their way up to the Symphony Program by high school. A growing number, from the Boys and Girls Club, were exposed to music first through HYS's Music4Kids and have matriculated into the BGCH Band. Others join HYS as teens to supplement their participation in their school programs. And yet others may enroll in HYS Academy to learn a string instrument if their primary instrument is a wind! This multiplicity of entry points to HYS is really something to be proud of, as it is evidence of *how music brings together people of different backgrounds and interests.*

Second, how dedicated our students are to helping make music meaningful to those around them. We recently surveyed students in YSII and CO, asking them how their participation in the educational Listen & Learn concerts affects our communities.

My favorite responses of theirs:

- “We hopefully inspire young people to be responsible, work together, and take up an instrument!”
- “We become community role models.”
- “Kids are our future musicians.”
- “It gives us musicians the opportunity to give back.”
- “The concerts show my love, determination, and hard work towards music. I hope [our performances] convey these feelings to the audience.”
- “It inspires other kids to take up music when they see regular kids like them playing in an orchestra.”

Third, the amazing level of dedication, work ethics, and high standards that our concert parents, volunteers, music and administrative staff, and board members all uphold in helping HYS execute its mission day after day.

Being the ‘new kid on the block,’ I have made it a point to observe as many rehearsals, meetings, and events as possible, to get a feel for HYS’s pace and personage. It’s humbling to see how much time and effort is volunteered. Four concerts by seven ensembles at three venues in one month does not happen by itself!

I am looking forward to moving full speed ahead with HYS and to furthering our music’s reach. Thank you again for your commitment to helping Hawaii’s youth develop musical futures!

Aloha,

Randy Wong



A concerted effort to Reach Out and Play Together

Give to HYS

Help HYS continue its mission to make quality music education available to all of Hawaii’s youths. For easy online giving, visit our website www.hiyouthsymphony.org. Or, give with a gift made payable to HYS and send to: **1110 University Avenue, Suite 200, Honolulu, HI 96826-1598.**

HYS also accepts:


- ♪ Gifts of stock — we’d be pleased to discuss the benefits of leaving a legacy to HYS through estate planning
- ♪ In-Kind Gifts — instruments (winds & brass for our Boys & Girls Club Band program; strings; percussion; keyboards) or office supplies (particularly needed is a network laser printer, reams of paper, etc.)

Please call 941-9706 for more information. We depend on community support to keep the music playing. Mahalo! ♪



Concert Commendations


HYS Academy Students Fiddle for Fun!

All four of the HYS Academy's string orchestras performed April 28 at Kaimuki High School Auditorium. Led by conductors **Joan Doike**, **Helen Fong**, and **Chad Uyehara**, the orchestras performed a wide variety of music written and arranged especially for developing string players. "Old MacDonald Had a Farm" was a big hit with the Beginning String Ensemble, with all sections (even the basses!) getting a chance to play the melody. Intermediate String Ensemble's "Kabuki Dance" whisked the musicians to the far-off shores of Japan, with Impressionist harmonies and pizzicato that sounded just like the kotos and shamisens being emulated. By contrast, String Orchestra Ensemble's rip-roaring, foot-stomping "Country Hoedown" had the kind of energy and enthusiasm all young fiddlers should aspire to. Concert String Orchestra finished the afternoon's program with an arrangement of Richard Wagner's operatic Overture to *Rienzi* and the fugue-like "Maharaja." Congratulations to all the performers for a job well done! 



YSII & CO Conquer Challenging Programs

Three conductors and nearly 200 students performed April 22 at Roosevelt High School Auditorium in the annual YSII/CO Spring Community Concert, led by **Derrick Yamane**, **Susan Ochi-Onishi**, and **Hannah Watanabe**, respectively. Ambitious repertoire, like Jean Sibelius's *Finlandia* and the 'Finale' from Antonin Dvorak's Ninth Symphony, were all executed with exquisite nuance, attention to dynamics, and overall mastery. The Concert Orchestra showcased a number of fine soloists, particularly on trumpet, violin, and trombone, in *Tales of Vandosar*. **Kilinoelani Montgomery**, a freshman from Kamehameha Schools and student of Ignace Jang, is concertmaster for YSII and wowed the audience with two movements from Antonio Vivaldi's 'Winter' movement from *The Four Seasons*.

The YSII/CO Spring Community Concert also kicked off HYS's 2012 food drive for the Hawaii Food Bank, organized in conjunction with the League of American Orchestras's Orchestras Feeding America campaign. All across the nation, professional and youth orchestras alike have been helping the fight against hunger. Last year, HYS families donated over 1,400 pounds of canned goods and non-perishable food items. We thank everyone who attended this year's YSII/CO concert, and made a donation to HYS or the Hawaii Food Bank! 



Top Left: YSII spring concert trombones. Top Right: Closeup of CO winds tootin' away!
Bottom Left: YSII string sections. Bottom Right: Concertmaster Kilinoelani Montgomery performs Vivaldi.

YSI Makes Its Kahilu Theatre Debut



Left: a young guest conductor strikes up the orchestra. Right: Concertmaster Roy Nakamaejo and HYS alum Dave Masunaga speak to the Waimea community.

In February, YSI traveled to the Big Island for HYS's annual neighbor island concert series. This was the group's first trip north to Waimea, as previous tours had gone either to Kona or Hilo. The students performed three free community concerts at the historic Kahilu Theatre; two of these concerts were Listen & Learn concerts filled with over 800 Big Island school children! 🎵

Boys & Girls Explore 'Music In The Clubhouse'

HYS's Music In The Clubhouse program, offered in partnership with the **Boys & Girls Club of Hawaii (BGCH)**, is just about to complete its fourth year of music-making fun! Serving neighborhood kids primarily from the McCully, University, Makiki, and Ala Wai areas, Music In The Clubhouse provides Music4Kids general music and band classes that are designed to help fill gaps left by severe cutbacks in music education and arts access. The classes, taught by **Joy Waikoloa** and **Wayne Fanning**, meet twice a week and everyone gets a chance to play an instrument, do some singing, and read music.

In addition to the programs' attention to music literacy, youth also start developing skills they'll need lifelong, like listening to understand, staying focused, respecting others, paying attention, and following directions. See? Music helps you do better in school! 🎵



HYS Welcomes Back an Alum

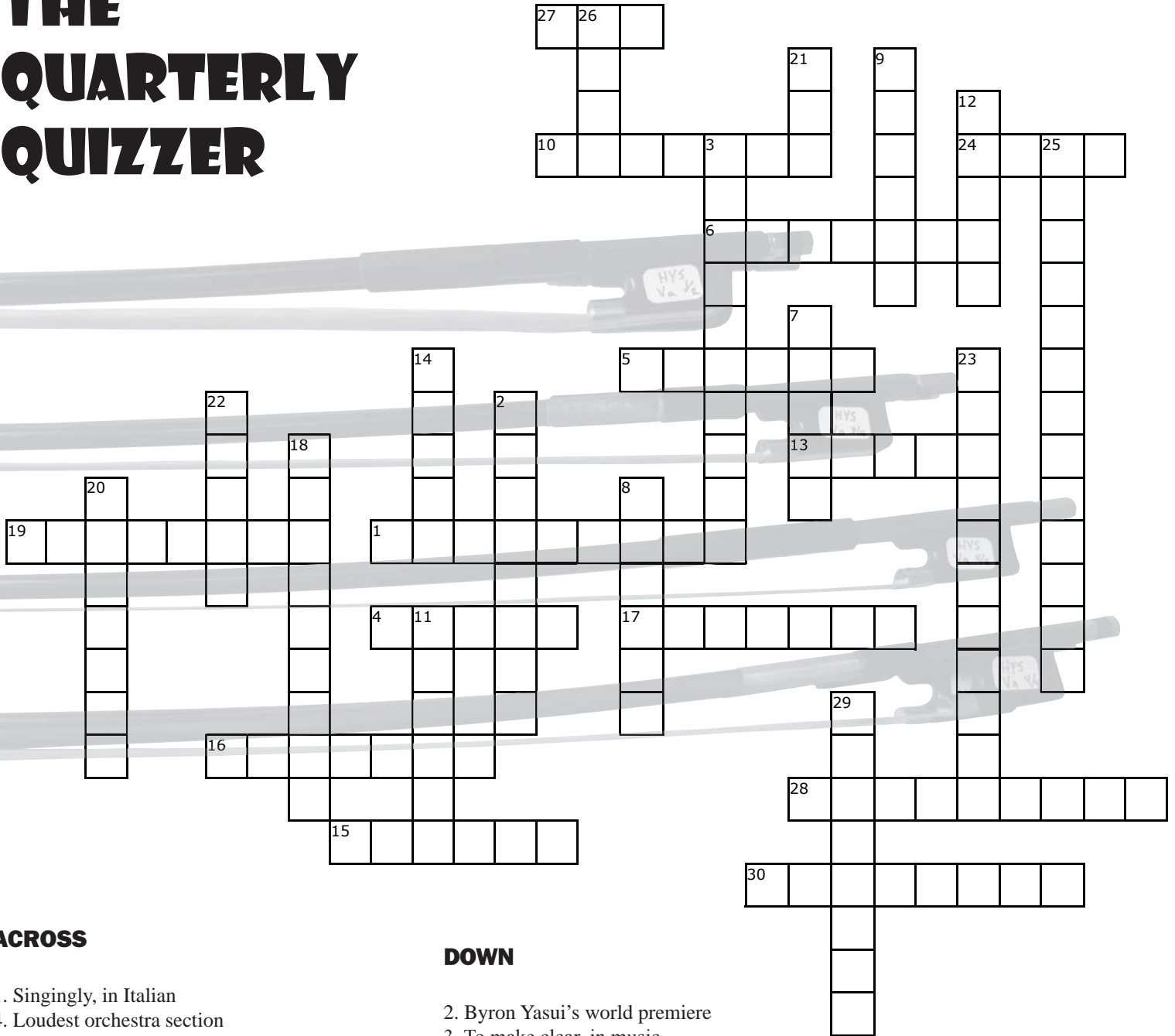
HYS's new E.D. **Randy Wong** made his first public appearance at the YSI Spring Community Concert. "Being a part of the HYS team is really a homecoming for me," Wong remarked, "because HYS is where I grew up and dreamed of a future life in music." Wong has recently been profiled in 'People Who Make Hawaii Work' (*Pacific Business News*) and will be featured soon on radio segments for KGU's *ThinkTech Radio* (hosted by **Alan Okami**) and HPR's *Business of the Arts* (hosted by **Judy Neale**).

HYS hosted a reception following the concert that was attended by the evening's guest performers, alumni and supporters. An entire roast pig, served Chinese style, was generously donated by **Sifu Kimo Wong** (no relation). Wines, donated by **Robin and Lillian Yoshimura**, and a variety of sushi, soft drinks, and other items were donated by Board members **Patti Look, Richard Ing, Tom Bingham, Jean Tsukamoto, and Malcolm Lau**.

Mahalos are due to **Vicky Chiu-Irion** and the HYS administrative staff (**Meredith Prescott, Ann Doike, and Janet Morita**) for their help in coordinating the reception and making it a fabulous success. 🎵



THE QUARTERLY QUIZZER



ACROSS

- 1. Singingly, in Italian
- 4. Loudest orchestra section
- 5. "Animal Farm" composer
- 6. A bowed dramatic effect
- 10. Pitch oscillation
- 13. A giving person
- 15. YSII conductor
- 16. Keyboard instrument used in *The Nutcracker*
- 17. Walking tempo
- 19. YSI maestro
- 24. Opposite of pizzicato (plucking of strings)
- 27. HYS summer camp
- 28. CO performed this movie medley last concert
- 30. CO conductor Hannah _____

DOWN

- 2. Byron Yasui's world premiere
- 3. To make clear, in music
- 7. Exec. Dir. Wong
- 8. Fast and lively, in Italian
- 9. A cold season
- 11. Ritmo, in English
- 12. A melodic round
- 14. Best break food
- 18. Honolulu's concert hall
- 20. Yamane's balance of sound
- 21. The new local symphony
- 22. "Howard's Day Off" (YSI guest emcee)
- 23. HYS' favorite canned good
- 25. Lead violinist
- 26. A neighbor island involved with HYS
- 29. How does one get to Carnegie Hall?

DON'T FORGET TO STOP BY
OUR FACEBOOK & TWITTER
(@HIYOUTHSYMPHONY)
FOR MORE MUSICAL FUN!

* The answers will be posted on Facebook before the next newsletter



Hawaii Youth Symphony Association
1110 University Ave., #200 Honolulu, HI 96826

(808) 941-9706 • admin@HiYouthSymphony.org
Visit us on *Facebook* and *Twitter*: @HiYouthSymphony

Non Profit
U.S. Postage
PAID
Honolulu, HI
Permit No. 1177

Music is for everyone



JOIN US FOR A SUMMER FILLED WITH MUSIC!

SUMMER STRINGS

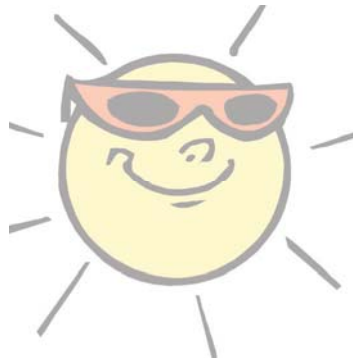
The classes run weekdays (M-F) from **June 12-July 13** at St. Andrew's Priory and are taught by Chad Uyehara of the HYS Academy.

The program is for students **8 and older**, who wish to learn violin, viola, cello, or bass.

♪ **Beginning Class:** 1:30-2:30 pm; students with no experience

♪ **Intermediate Class:** 3:00-4:00 pm; students with 1-2 years experience

The 5-week session costs \$195. Affordable instrument rentals are available. This is a great first step for kids who want to play in an orchestra and make new friends!



PACIFIC MUSIC INSTITUTE 2012

PMI is an intensive music immersion program for students in **grades 8-12**.

Sessions run daily from **July 14-22** at the UH Music Department, with concerts held at UH and Pearl City Cultural Center.

This concentrated study course focuses on five ensembles (jazz band, concert band, chamber music, string orchestra and symphony orchestra), each of which presents free concerts at the end of the program.

Registration for this is \$325 for Oahu students and \$200 for neighbor island students.

Dormitory accommodations are available for an additional \$600. Please call 941-9706!